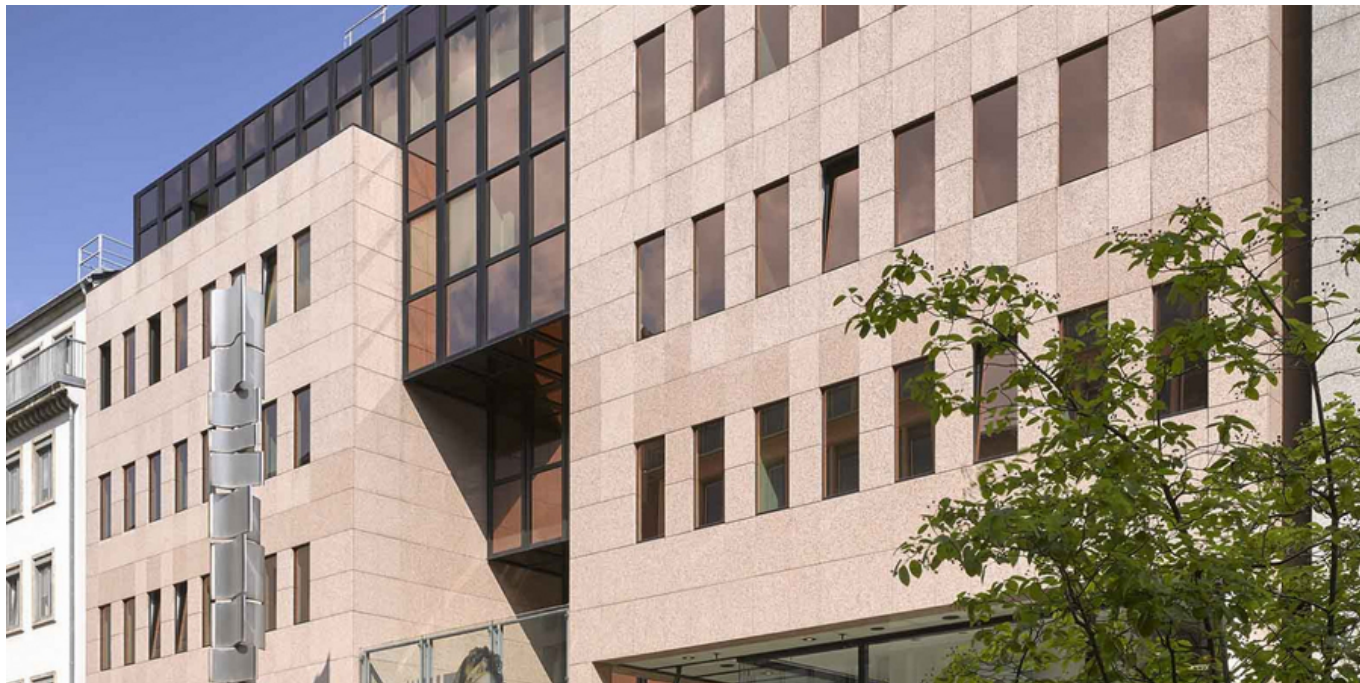


GALERIE LUISE



ABOUT THE PROJECT

The Galerie Luise, known beyond the borders of Hanover, was opened in 1987 and is a traditional ensemble of buildings with a total area of around 15,000 m², spread over offices and a central shopping arcade. The property combines the exclusive retail location of Luisenstrasse with the high-quality office locations in Theaterstrasse and Joachimstrasse and is accessible via three entrances from all adjacent streets. The prestigious commercial building also has a four-storey underground car park with over 470 parking spaces.

Type

Office, Retail, Gastronomy

Location

Hanover,
Luisenstraße

Area

15,000 m²

Architects