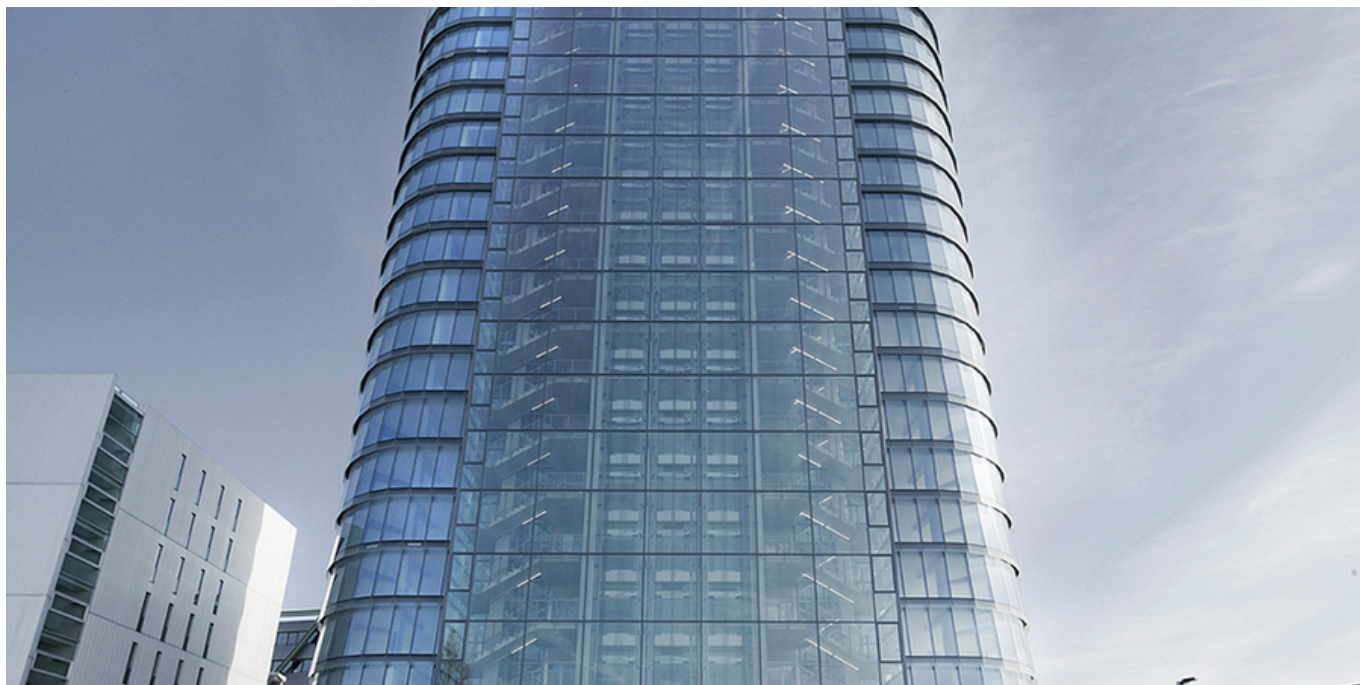


SIGN!



ABOUT THE PROJECT

The 20-storey building designed by Helmut Jahn and owned by the Hanse Merkur Insurance Group was completed in 2010, covering an area of around 15,000m² gross floor space and is used by a large number of tenants from various industries. The anchor tenant since 2010 is the European law firm Noerr. With its transparent glass façade and the spectacular Skydeck, the high-rise forms yet another landmark in the city skyline and, standing at a height of 76 meters, is the tallest building in the Dusseldorf Media Harbor.

Type

Office, Retail

Location

Dusseldorf,
Medienhafen,
Speditionstraße

Area

15,000 m²

Architects